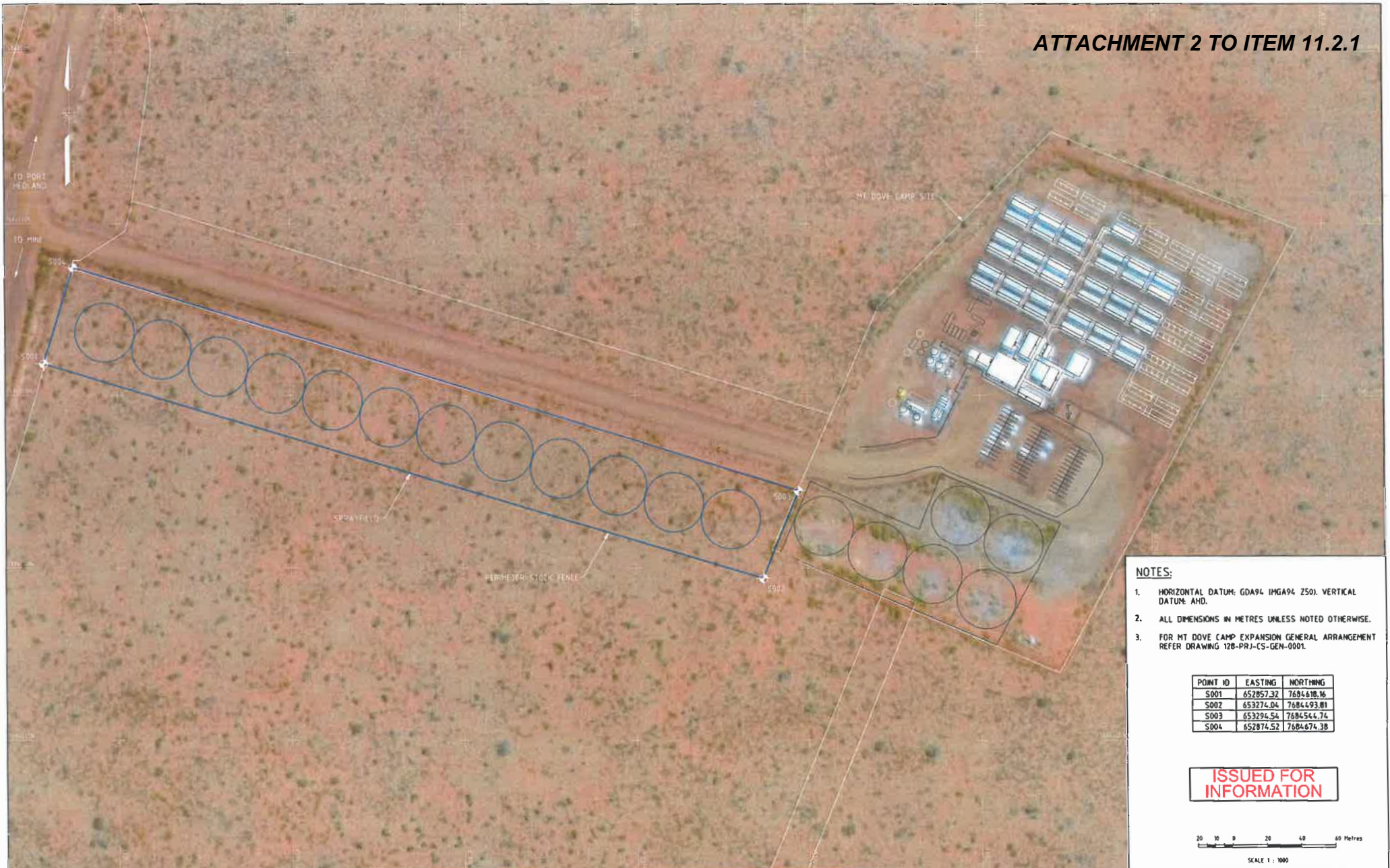


ATTACHMENT 2 TO ITEM 11.2.1



NOTES:

1. HORIZONTAL DATUM: GDA94 (MGA94 Z50). VERTICAL DATUM: AHD.
2. ALL DIMENSIONS IN METRES UNLESS NOTED OTHERWISE.
3. FOR MT DOVE CAMP EXPANSION GENERAL ARRANGEMENT REFER DRAWING 128-PRJ-CS-GEN-0001.

POINT ID	EASTING	NORTHING
S001	652857.32	7684618.16
S002	653274.04	7684493.81
S003	653294.54	7684544.74
S004	652874.52	7684674.38

**ISSUED FOR
INFORMATION**



SCALE 1 : 1000

NO.	DOCUMENT NO	REFERENCE DOCUMENT	REV	DATE	REVISION	DES	CHK	APP	DATE	NEW	END	REVISION	DES	CHK	APP	DATE	SCALE
1	128-PRJ-CS-GEN-0001	GENERAL ARRANGEMENT/FACILITIES LIST	0	8.11.17	ISSUED FOR INFORMATION	DS	DL	ADD	HP								1:1000

TCS Pilbara Pty Ltd
Referenced Plan / Document
Certificate No:
CDC 802004
Registered in the Public Register of the State of Western Australia

scope
Australia

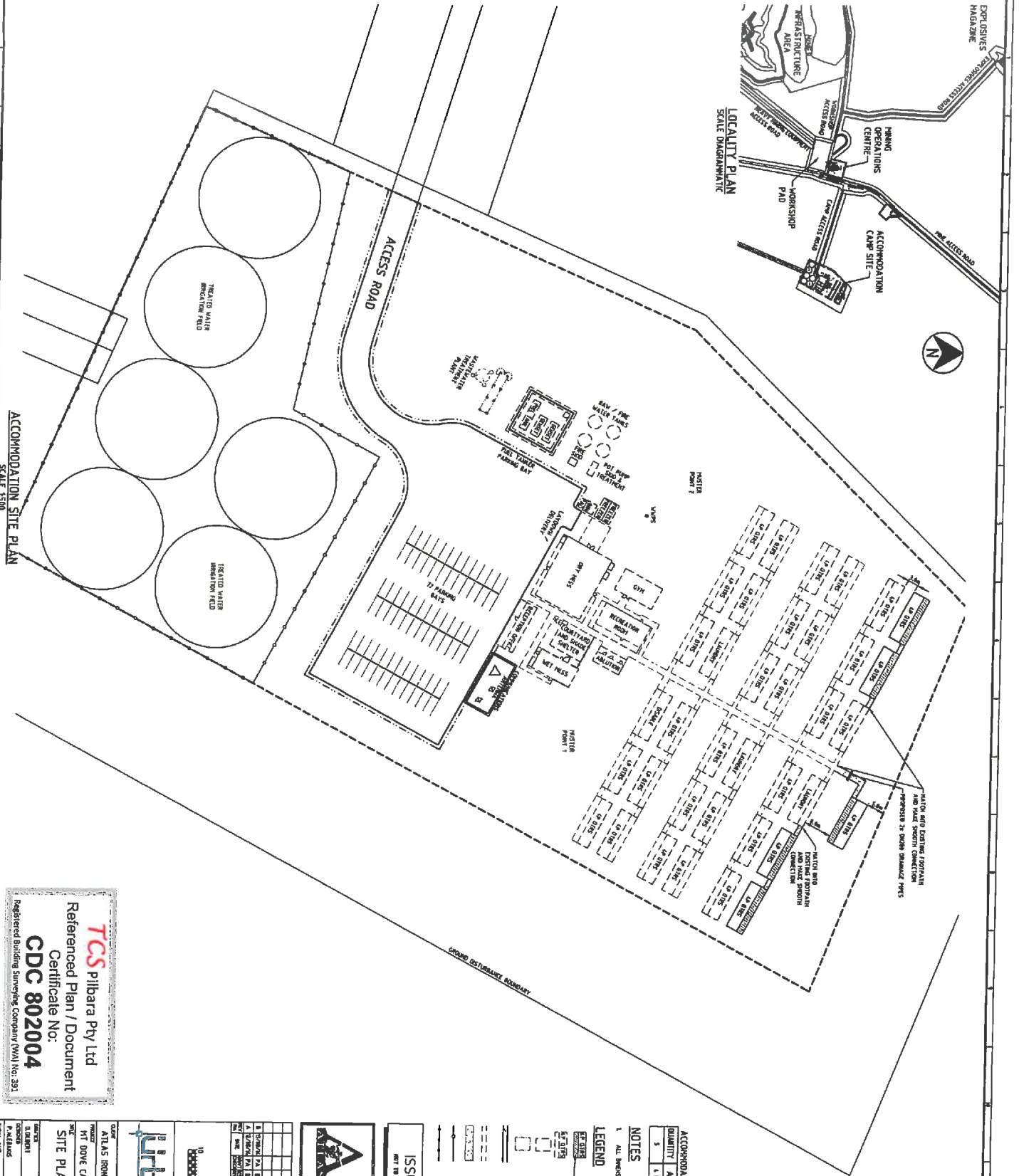
This document shall not be copied or reproduced in any form or used for any purpose other than expressly intended without written approval of Scope Australia Pty Ltd.

SCOPE AUSTRALIA PTY LTD A.B.N. 22 664 941 974

ATLAS IRON LIMITED
MT DOVE CAMP EXPANSION
HYDRAULIC
SPRAYFIELD

DWG NO. **128-PRJ-HY-GEN-0001**

A1



TCS
Pilbara Pty Ltd
Referenced Plan / Document
Certificate No:
CDC 802004
Registered Building Surveying Company (WA) No. 391

Urbanise WA
6/ANBERUS SOLUTIONS
34/700 Southport Road
Southport, QLD 4215
Phone: 07 5599 1111
Fax: 07 5599 1112
Email: info@urbanisewa.com.au
Web: www.urbanisewa.com.au

ATLAS IRON LIMITED
MT DOVE CAMP EXPANSION
SITE PLAN - ACCOMMODATION CAMP

NO.	REVISION	DATE	BY	CHKD	APPD	DESCRIPTION
1	ISSUED FOR TENDER	13/08/2014	PA	PA	PA	ISSUED FOR TENDER
2	ISSUED FOR TENDER	13/08/2014	PA	PA	PA	ISSUED FOR TENDER
3	ISSUED FOR TENDER	13/08/2014	PA	PA	PA	ISSUED FOR TENDER
4	ISSUED FOR TENDER	13/08/2014	PA	PA	PA	ISSUED FOR TENDER
5	ISSUED FOR TENDER	13/08/2014	PA	PA	PA	ISSUED FOR TENDER
6	ISSUED FOR TENDER	13/08/2014	PA	PA	PA	ISSUED FOR TENDER
7	ISSUED FOR TENDER	13/08/2014	PA	PA	PA	ISSUED FOR TENDER
8	ISSUED FOR TENDER	13/08/2014	PA	PA	PA	ISSUED FOR TENDER
9	ISSUED FOR TENDER	13/08/2014	PA	PA	PA	ISSUED FOR TENDER
10	ISSUED FOR TENDER	13/08/2014	PA	PA	PA	ISSUED FOR TENDER

ISSUED FOR TENDER
NOT TO BE USED FOR CONSTRUCTION PURPOSES

The Pilbara's Emerging Powerhouse
PRJ0163-128-453-CV-DRG-0003
Revision
Date
8/4/14

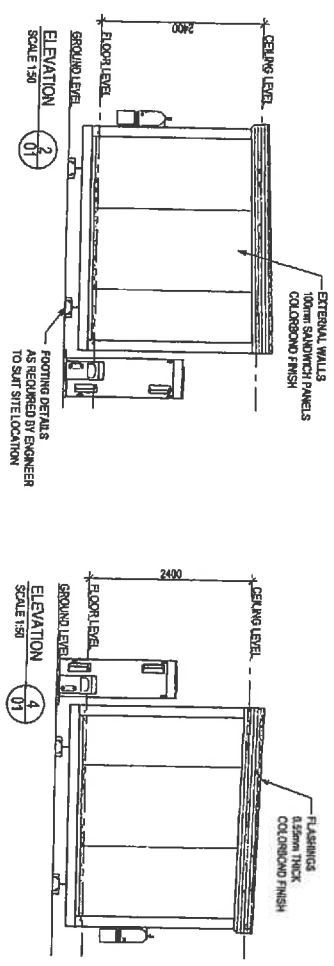
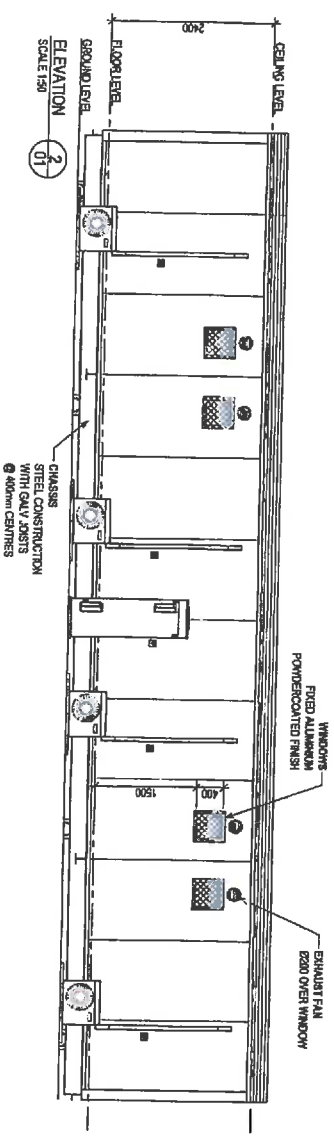
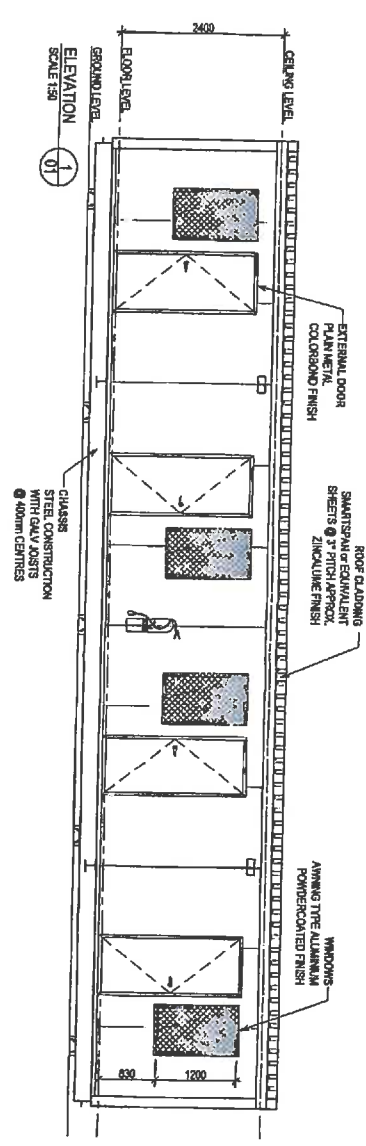
LEGEND
1. ALL DIMENSIONS IN METRES UNLESS NOTED OTHERWISE
2. ALL DIMENSIONS IN METRES UNLESS NOTED OTHERWISE
3. ALL DIMENSIONS IN METRES UNLESS NOTED OTHERWISE
4. ALL DIMENSIONS IN METRES UNLESS NOTED OTHERWISE
5. ALL DIMENSIONS IN METRES UNLESS NOTED OTHERWISE
6. ALL DIMENSIONS IN METRES UNLESS NOTED OTHERWISE
7. ALL DIMENSIONS IN METRES UNLESS NOTED OTHERWISE
8. ALL DIMENSIONS IN METRES UNLESS NOTED OTHERWISE
9. ALL DIMENSIONS IN METRES UNLESS NOTED OTHERWISE
10. ALL DIMENSIONS IN METRES UNLESS NOTED OTHERWISE

NOTES
1. ALL DIMENSIONS IN METRES UNLESS NOTED OTHERWISE
2. ALL DIMENSIONS IN METRES UNLESS NOTED OTHERWISE
3. ALL DIMENSIONS IN METRES UNLESS NOTED OTHERWISE
4. ALL DIMENSIONS IN METRES UNLESS NOTED OTHERWISE
5. ALL DIMENSIONS IN METRES UNLESS NOTED OTHERWISE
6. ALL DIMENSIONS IN METRES UNLESS NOTED OTHERWISE
7. ALL DIMENSIONS IN METRES UNLESS NOTED OTHERWISE
8. ALL DIMENSIONS IN METRES UNLESS NOTED OTHERWISE
9. ALL DIMENSIONS IN METRES UNLESS NOTED OTHERWISE
10. ALL DIMENSIONS IN METRES UNLESS NOTED OTHERWISE

QUANTITY	ACCOMMODATION CAMP EQUIPMENT DESCRIPTION
1	1 PERSON ACCOMMODATION UNIT 3.6m x 3.6m (2 PERSONS)

ACCOMMODATION CAMP - 131 PERSON CAPACITY
1. ALL DIMENSIONS IN METRES UNLESS NOTED OTHERWISE
2. ALL DIMENSIONS IN METRES UNLESS NOTED OTHERWISE
3. ALL DIMENSIONS IN METRES UNLESS NOTED OTHERWISE
4. ALL DIMENSIONS IN METRES UNLESS NOTED OTHERWISE
5. ALL DIMENSIONS IN METRES UNLESS NOTED OTHERWISE
6. ALL DIMENSIONS IN METRES UNLESS NOTED OTHERWISE
7. ALL DIMENSIONS IN METRES UNLESS NOTED OTHERWISE
8. ALL DIMENSIONS IN METRES UNLESS NOTED OTHERWISE
9. ALL DIMENSIONS IN METRES UNLESS NOTED OTHERWISE
10. ALL DIMENSIONS IN METRES UNLESS NOTED OTHERWISE

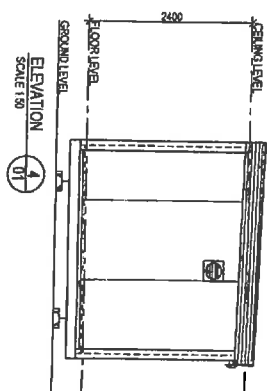
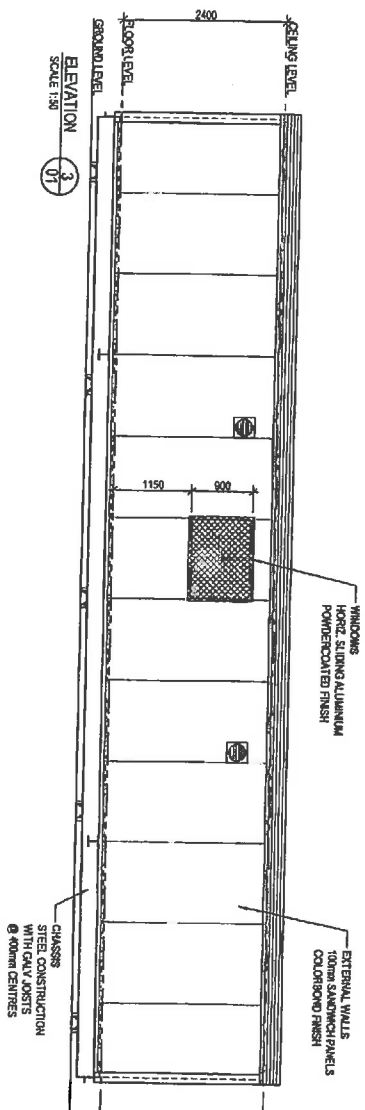
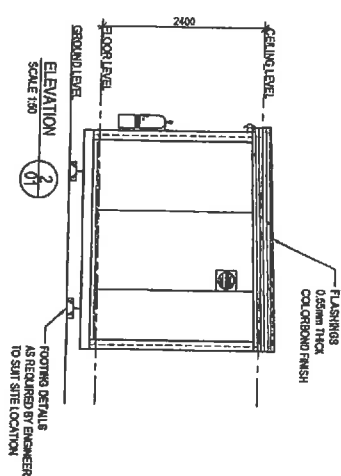
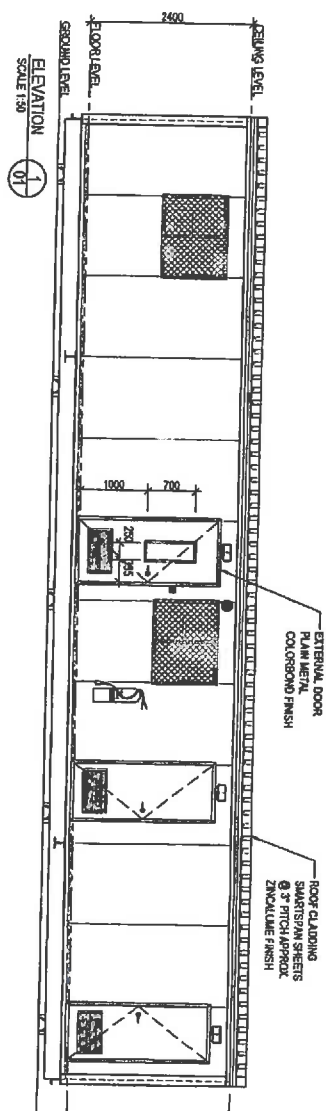
BUILDING DESIGN CRITERIA
 Wind Load: In accordance with AS1170.2:2002
 REGION D, TERRACE CATEGORY 2
 Annual Probability of Exceedance 1:500
 RESONANT WIND SPEED - V50 = 89 m/s
 BASE TO BUILDING CLASS 1B
 CLIMATE ZONES 1, 3, 4, 5 & 6



TCS Pilbara Pty Ltd
 Referenced Plan / Document
 Certificate No:
CDC 802004
 Registered Building Surveying Company (VWA No: 39)

CLIENT APPROVAL		DATE		SCALE		DATE	
ELEVATION 01				A2		2 of 9	
ELEVATION 02				A2		2 of 9	
ELEVATION 03				A2		2 of 9	
ELEVATION 04				A2		2 of 9	
ELEVATION 05				A2		2 of 9	
ELEVATION 06				A2		2 of 9	
ELEVATION 07				A2		2 of 9	
ELEVATION 08				A2		2 of 9	
ELEVATION 09				A2		2 of 9	
ELEVATION 10				A2		2 of 9	
ELEVATION 11				A2		2 of 9	
ELEVATION 12				A2		2 of 9	
ELEVATION 13				A2		2 of 9	
ELEVATION 14				A2		2 of 9	
ELEVATION 15				A2		2 of 9	
ELEVATION 16				A2		2 of 9	
ELEVATION 17				A2		2 of 9	
ELEVATION 18				A2		2 of 9	
ELEVATION 19				A2		2 of 9	
ELEVATION 20				A2		2 of 9	
ELEVATION 21				A2		2 of 9	
ELEVATION 22				A2		2 of 9	
ELEVATION 23				A2		2 of 9	
ELEVATION 24				A2		2 of 9	
ELEVATION 25				A2		2 of 9	
ELEVATION 26				A2		2 of 9	
ELEVATION 27				A2		2 of 9	
ELEVATION 28				A2		2 of 9	
ELEVATION 29				A2		2 of 9	
ELEVATION 30				A2		2 of 9	
ELEVATION 31				A2		2 of 9	
ELEVATION 32				A2		2 of 9	
ELEVATION 33				A2		2 of 9	
ELEVATION 34				A2		2 of 9	
ELEVATION 35				A2		2 of 9	
ELEVATION 36				A2		2 of 9	
ELEVATION 37				A2		2 of 9	
ELEVATION 38				A2		2 of 9	
ELEVATION 39				A2		2 of 9	
ELEVATION 40				A2		2 of 9	
ELEVATION 41				A2		2 of 9	
ELEVATION 42				A2		2 of 9	
ELEVATION 43				A2		2 of 9	
ELEVATION 44				A2		2 of 9	
ELEVATION 45				A2		2 of 9	
ELEVATION 46				A2		2 of 9	
ELEVATION 47				A2		2 of 9	
ELEVATION 48				A2		2 of 9	
ELEVATION 49				A2		2 of 9	
ELEVATION 50				A2		2 of 9	
ELEVATION 51				A2		2 of 9	
ELEVATION 52				A2		2 of 9	
ELEVATION 53				A2		2 of 9	
ELEVATION 54				A2		2 of 9	
ELEVATION 55				A2		2 of 9	
ELEVATION 56				A2		2 of 9	
ELEVATION 57				A2		2 of 9	
ELEVATION 58				A2		2 of 9	
ELEVATION 59				A2		2 of 9	
ELEVATION 60				A2		2 of 9	
ELEVATION 61				A2		2 of 9	
ELEVATION 62				A2		2 of 9	
ELEVATION 63				A2		2 of 9	
ELEVATION 64				A2		2 of 9	
ELEVATION 65				A2		2 of 9	
ELEVATION 66				A2		2 of 9	
ELEVATION 67				A2		2 of 9	
ELEVATION 68				A2		2 of 9	
ELEVATION 69				A2		2 of 9	
ELEVATION 70				A2		2 of 9	
ELEVATION 71				A2		2 of 9	
ELEVATION 72				A2		2 of 9	
ELEVATION 73				A2		2 of 9	
ELEVATION 74				A2		2 of 9	
ELEVATION 75				A2		2 of 9	
ELEVATION 76				A2		2 of 9	
ELEVATION 77				A2		2 of 9	
ELEVATION 78				A2		2 of 9	
ELEVATION 79				A2		2 of 9	
ELEVATION 80				A2		2 of 9	
ELEVATION 81				A2		2 of 9	
ELEVATION 82				A2		2 of 9	
ELEVATION 83				A2		2 of 9	
ELEVATION 84				A2		2 of 9	
ELEVATION 85				A2		2 of 9	
ELEVATION 86				A2		2 of 9	
ELEVATION 87				A2		2 of 9	
ELEVATION 88				A2		2 of 9	
ELEVATION 89				A2		2 of 9	
ELEVATION 90				A2		2 of 9	
ELEVATION 91				A2		2 of 9	
ELEVATION 92				A2		2 of 9	
ELEVATION 93				A2		2 of 9	
ELEVATION 94				A2		2 of 9	
ELEVATION 95				A2		2 of 9	
ELEVATION 96				A2		2 of 9	
ELEVATION 97				A2		2 of 9	
ELEVATION 98				A2		2 of 9	
ELEVATION 99				A2		2 of 9	
ELEVATION 100				A2		2 of 9	

Fleetwood
 120 ASBESTOS FREE HIGH WIND CODE W.A. 9057
 48 STAFF QTRs 14.4m x 2.3m - ELEVATIONS
 5200001 / 80102
 59217
 1



TCS Pilbara Pty Ltd
Referenced Plan / Document
Certificate No:

CDC 802004

[illegible]

