

**DRAFT PORT HEDLAND
ALCOHOL AND OTHER DRUG MANAGEMENT PLAN
2018-2020**

Long-term Outcome: Reduce the harms associated with alcohol and other drug use.

Endorsed: _____

date: _____

List Of Acronyms Used In This Document

ADF	Alcohol and Drug Foundation
AHL Hostels	Aboriginal Hostels Ltd
AOD	Alcohol and Other Drugs
AODMP	Alcohol and Other Drug Management Plan
AVP	Alternatives To Violence
Bloodwood Tree	Bloodwood Tree Association Inc
DAA	Department of Aboriginal Affairs
Dept.	Department
Dept PM&C	Department Prime Minister & Cabinet
FASD	Fetal Alcohol Spectrum Disorders
HCR	Hedland Community Radio
IBN	IBN Corporation Pty Ltd (Yinhawangka, Banyjima and Nyiyaparli peoples)
LDAG	Local Drug Action Group
NSP	Needle and Syringe Program
MHC	Mental Health Commission
PADAP	Pilbara Aboriginal Drug & Alcohol Program
PCADS	Pilbara Community Alcohol & Drug Services
PCLS	Pilbara Community Legal Service
PH	Port Hedland
PHAO DMP	Port Hedland Alcohol and Other Drug Management Plan
PHAO DMPWG	Port Hedland Alcohol and Other Drug Management Plan Working Group
PMHU	Pilbara Mental Health Unit
Rec	Recreation
SDERA	School Drug Education and Road Aware
SHBBVP	Sexual Health Blood Borne Virus Program
TOPH	Town of Port Hedland
WACOSS	WA Council of Social Service
WACHS	WA Country Health Service
WAPHA	WA Primary Health Alliance
WA Police	WA Police Port & South Hedland
WASUA	WA Substance Users Association
Women's Refuge	Port Hedland Women's Refuge
WWC	Hedland Well Women's Centre
Yaandina	Yaandina Community Services
YIC	Youth Involvement Council
YJS	Youth Justice Services

PURPOSE

The 2018-2020 Port Hedland Alcohol and Other Drug Management Plan (PHAODMP) seeks to build upon efforts to date in order to continue to reduce the level of harmful alcohol and other drug use within the local community. This is to be achieved through a continued focus on:

- Building upon the achievements and results of the 2014-2016 PHAODMP.
- Further enhancing the capacity of the community and service providers to identify and work towards addressing local alcohol related harm issues.
- Continuing to actively support partnerships between community and service providers to identify and address local issues.
- Guiding the allocation of resources to implement priority actions and strategies.
- Providing a means to coordinate, implement and evaluate an evidence-based, whole of community approach in a timely and appropriate manner.

BACKGROUND AND DEVELOPMENT OF THE PHAODMP

The Port Hedland AODMP was developed using the best practice principles (see Appendix 1). The PHAODMPWG has been working collaboratively together since 2013. The PHAODMPWG are committed to the long-term outcome of reducing the harms associated with alcohol and other drug use in our wider Town of Port Hedland community. All PHAODMP participatory organisations are committed to a focus on prevention-based activity and a continued commitment to working together for the long-term.

The 2014-2016 Port Hedland Alcohol and Other Drug Management Plan was evaluated and reviewed during the course of dedicated workshops on 21st June 2017 and 21st September 2017 (please see Appendix 2 for outcomes from review of 2014-2016 PHAODMP).

From the preliminary evaluation, review, service/stakeholder group consultation to date, the reduction of the secondary supply of alcohol to our local youth will continue to be a core area of focus. The key issue of concern also raised by service providers and stakeholders has re-iterated that there is a general culture and acceptance of harmful alcohol use across the community. The high levels of harm contribute a significant burden to WA Police, emergency services and other community services. The use and acceptance of the excessive consumption of alcohol has a significant impact on the social, health, economic and environmental wellbeing of people, families and the community/community pride as a whole.

It was agreed that, in order to continue to introduce positive change towards changing the culture of harmful alcohol use within the community, four priority areas would be selected for action. By focusing on four specific issues, the PHAODMPWG believes that they will be able to capture the interest of the majority of the community by having them identify closely with at least one of the priority areas.

CONTEXT

Alcohol and other drug-related problems contribute a significant burden to health, local government, Police, emergency and other community services. The use and acceptance of the harmful consumption of alcohol and other drug use has a significant impact on social, health, economic and environmental wellbeing of people, families and the community (including community pride) as a whole.

Alcohol-consumption rates are higher in the Pilbara than the State average and this is reflected in the harm statistics, specifically in relation to:

- Estimated per capita pure alcohol consumption
- High risk of single occasion and lifetime alcohol related harm
- Alcohol-related hospitalisations
- Alcohol-related Police callouts including domestic violence reports

For statistics, please contact the Mental Health Commission <https://www.mhc.wa.gov.au>

Alcohol is still identified as a priority area in the consultation process for Port/South Hedland. This is supported by anecdotal service providers/Counsellors, Police and other service providers information

LINKS TO EXISTING STRATEGIES

The strategy acknowledges the existing strategic framework of:

National Strategies:

- [National Drug Strategy 2017- 2026.](#)

State Strategies:

- [Draft WA Drug & Alcohol Interagency Strategy 2017-2021](#)
- [Western Australian Mental Health, Alcohol and Other Drug Services Plan 2015-2025](#)
- [WA Labor Methamphetamine Action Plan 2017](#)
- [WA Methamphetamine Strategy 2016](#)
- [Resilient Families Strong Communities 2016](#)
- [Drug and Alcohol Interagency Strategic Framework for Western Australia 2011-2015.](#)
- [Strong Spirit Strong Mind - Aboriginal Drug and Alcohol Framework for Western Australia 2011- 2015.](#)
- [Volatile Substance Use Support Plan 2012-2015.](#)

Local Strategies:

- Port Hedland Liquor Accord
- Hedland FASD Network
- Proposed Town of Port Hedland Community Safety and Crime Prevention Plan

WORKING DOCUMENT

The Port Hedland Alcohol and Other Drug Management Plan (PHAODMP) is a two-year plan. There may be cases where strategy and key priority areas will adopt some variation according to emerging trends in the community.

MANAGEMENT AND GOVERNANCE

The PHAODMPWG has established governance and reporting framework to ensure coordinated implementation of the initiatives and reporting of the activities.

The PHAODMPWG meets 6 times per year. The secretariat support for the PHAODMPWG is provided by Bloodwood Tree. A Chairperson is elected from members of the member organisations.

The PHAODMPWG includes representatives from primary AOD support services and agencies operating in Port/South Hedland, Town of Port Hedland, WACHS, WA Police, PADAP, PCLS, PCADS, Bloodwood Tree, Wirraka Maya Aboriginal Health Service, YIC, Hope Services, Pilbara Community Services LTD, Dept Human Services, Helpingminds, Telethon Kids Institute, Dept. Corrective Services, Dept. Communities (Child Protection & Family Services, Sport & Rec and Housing), Dept. PM&C, MHC, ADF, LDAG, SDERA, HeadSpace, Well Women's Centre, Relationships Australia and Port Hedland Liquor Accord.

Other stakeholders are invited to attend, if appropriate and when necessary.

Contribution Areas of Members

Demand Reduction (educate/persuade/design/control)

Town of Port Hedland, WACHS, WA Police, PADAP, PCLS, PCADS, Bloodwood Tree, Wirraka Maya Aboriginal Health Service, YIC, Hope Services, Pilbara Community Services LTD, Dept Human Services, Helpingminds, Telethon Kids Institute, Dept. Corrective Services, Dept. Communities (Child Protection & Family Services, Sport & Rec and Housing), Dept. PM&C, MHC, ADF, LDAG, SDERA, HeadSpace, Well Women's Centre, Relationships Australia and Port Hedland Liquor Accord.

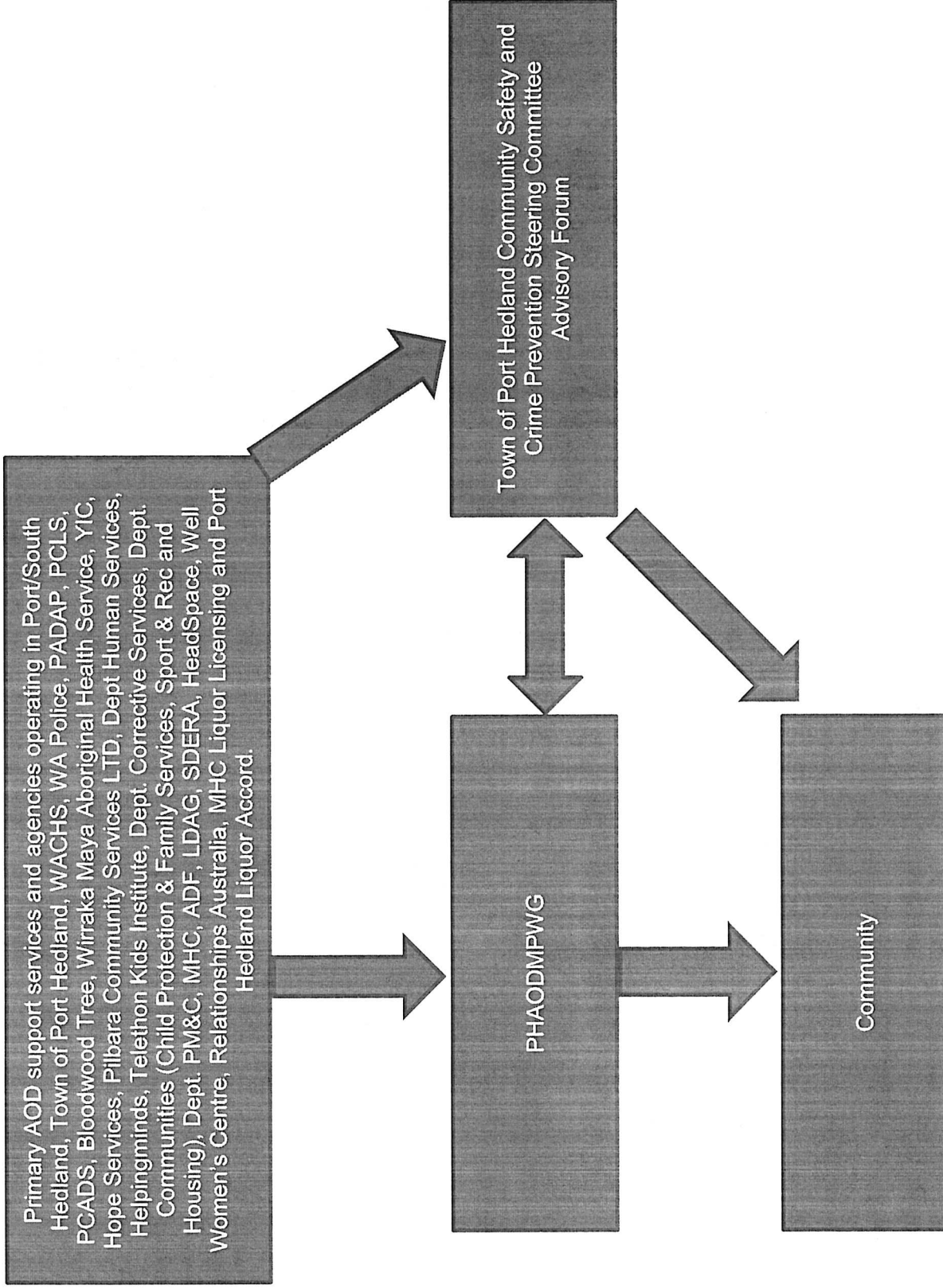
Supply Reduction (design/control)

Town of Port Hedland, WACHS, WA Police, PADAP, PCLS, PCADS, Bloodwood Tree, Wirraka Maya Aboriginal Health Service, YIC, Hope Services, Pilbara Community Services LTD, Dept Human Services, Helpingminds, Telethon Kids Institute, Dept. Corrective Services, Dept. Communities (Child Protection & Family Services, Sport & Rec and Housing), Dept. PM&C, MHC, ADF, LDAG, SDERA, HeadSpace, Well Women's Centre, Relationships Australia, MHC Liquor Licensing and Port Hedland Liquor Accord.

Harm Reduction (educate/persuade)

Town of Port Hedland, WACHS, WA Police, PADAP, PCLS, PCADS, Bloodwood Tree, Wirraka Maya Aboriginal Health Service, YIC, Helpingminds, Telethon Kids Institute, MHC, ADF, SDERA, HeadSpace, Well Women's Centre and Relationships Australia.

The PHAODMP Partnership diagram:



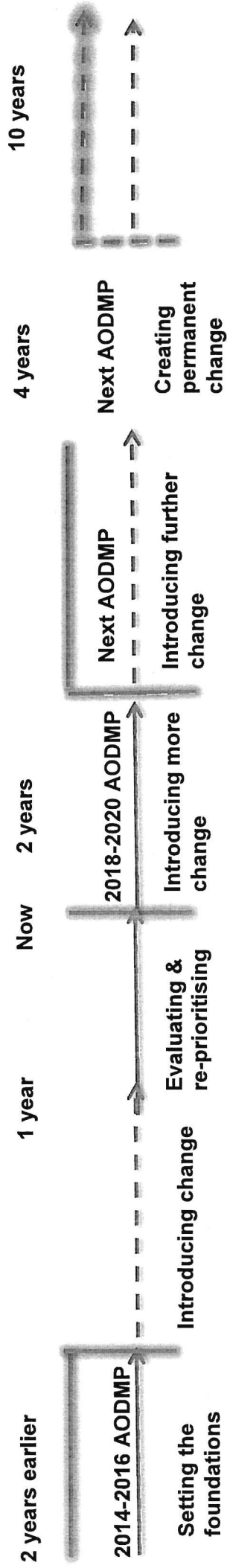
Review of AODMP – Development and Planning Checklist

Steps	Task	Date	Done
1. Review current AODMP	<ul style="list-style-type: none"> Review current AODMP and identify the current status of each of the strategy areas 	21 st June 2017 and 21 st September 2017	✓
	<ul style="list-style-type: none"> Gather existing/emerging information and research in relation to AOD related issues locally 	21 st June 2017 and 21 st September 2017	✓
2. Prioritise issues for action	<ul style="list-style-type: none"> With AODMP working group members, review current strategies in AOD plan/emerging information and prioritise the top two or three issues for action 	21 st June 2017 and 21 st September 2017	✓
	<ul style="list-style-type: none"> Work through each priority using the DAO <i>'mapping tool'</i> refine priorities by identifying target groups, community impact, contributing factors, etc. 	21 st June 2017 and 21 st September 2017	✓
3. Develop actions and implement plan	<ul style="list-style-type: none"> With AODMP working group, agree on a broad range of actions to address each priority. 	Commenced 23 rd November 2017 Still In Progress	
	<ul style="list-style-type: none"> Review current active members and identify any new members/organisations that should be approached to become part of the AODMP working group Complete an AODMP template for each priority issue, which includes – actions, timeline, resources and evaluation. 	23 rd November 2017	✓
4. Review the AODMP Working Group	<ul style="list-style-type: none"> Review AODMP working group purpose, structure, terms of reference, meeting structures, Chair, meeting secretariat, meeting schedules and reporting pathways etc. 	Commenced 23 rd November 2017 Still In Progress	
	<ul style="list-style-type: none"> Implement strategies and regularly report on progress to the AODMP management group (using AODMP working group member meeting reporting template). 	March 2018	
5. Review the AODMP	<ul style="list-style-type: none"> With AODMP working group members, identify a suitable date to review the AODMP and appropriate communication pathways to enable regular feedback to community and key stakeholder groups. 	March 2018	
		December 2018 – March 2019	

Priority Areas

During the evaluation and review of the 2014-2016 PHAODMP, as well as local service provider, stakeholder and community consultation, the following have been identified as the priority alcohol and other drug related harms for action under this plan.

1. **Changing the culture/normalisation of alcohol use in Port/South Hedland**
2. **Addressing the impact of alcohol on families and young people**
3. **Reducing alcohol-related violence in Port/South Hedland**
4. **Addressing needle syringe disposal issues and raising awareness of local NSP programs**



Priority 1: Changing the culture/normalisation of alcohol use in Port/South Hedland Short Term Outcomes (next 24 months)

- Community is more knowledgeable of the harm and impact caused by alcohol consumption.
- Community is more knowledgeable that alcohol is a whole of community issue.
- Community is more knowledgeable on the effective strategies, which reduce alcohol related harm, and the locally available AOD support services for the community.

Priority 2: Addressing the impact of alcohol on families and young people Short Term Outcomes (next 24 months)

- Community is more knowledgeable of the harms caused by alcohol, on families and young people.
- Promote the participation of families and young people, including vulnerable families and young people in AOD free diversionary activities and educational workshops.
- Community is more aware and knowledgeable of the harmful effects of the use of alcohol in sporting settings.

Priority 3: Reducing alcohol-related violence in Port/South Hedland Short Term Outcomes (next 24 months)

- Community is more knowledgeable on the link between alcohol and violence, including family domestic violence.
- Reduced number of incidences of alcohol-related violence and alcohol-related family domestic violence.

Priority 4: Addressing needle syringe disposal issues and raising awareness of local NSP programs

- Community is more knowledgeable on the need for NSP and the safe use and disposal of needles.
- Community is more knowledgeable on the correct way to dispose of needles, including reporting and handling of incorrectly disposed of needles from public areas.
- Reduced number of incidences of incorrectly disposed of needles in Port/South Hedland.

PRIORITY 1 Changing the culture/normalisation of alcohol use in Port/South Hedland

The culture of excessive alcohol consumption is having a significant impact on the social, emotional and physical wellbeing of the Port/South Hedland community, in particular high levels of alcohol related anti-social behaviour including verbal and physical abuse on streets, events/venues and in other public areas.

SHORT-TERM OUTCOME/S (next 24 months)	KEY PERFORMANCE INDICATOR	COLLECTION TOOL	COLLECTED BY
Community is more knowledgeable of the harm and impact caused by alcohol consumption	Pre/post community perception survey demonstrating an increase in knowledge/understanding	Perception Survey	All PHAODMP Members
Community is more knowledgeable that alcohol is a whole of community issue	Pre/post community perception survey demonstrating an increase in knowledge/understanding	Perception Survey	All PHAODMP Members
Community is more knowledgeable on the effective strategies which reduce alcohol related harm and the locally available AOD support services for the community	Pre/post community perception survey demonstrating an increase in knowledge/understanding	Perception Survey	All PHAODMP Members
ACTIONS			
Demand, Supply and Harm Reduction (educate/persuade/design/control)			
Develop and implement a Communication Plan (incl calendar of events) to distribute consistent messages for changing the culture/normalisation of alcohol use.	WACHS & Bloodwood Tree	MHC, ADF, TOPH & HCR	All PHAODMP Members Mar-May 18 Dec 18-Jan 19 Dec 19 – Jan 20
Identify opportunity for local media campaign to reflect key messages of the effects of alcohol and alcohol being a whole of community issue (radio ads promoting local services, health effects messages, local radio interviews with counsellors from services etc.).	TOPH & HCR	MHC & ADF	WACHS, PADAP, Bloodwood Tree, PCADS & Wirraka Maya May-Jun 18 Jan-Feb 19 Jan-Feb 20
Develop and implement a local public awareness education campaign to raise awareness of alcohol being a whole of community issue and the consequences of harmful alcohol use. Focus on broader community - Develop a local alcohol message that raises awareness of the areas identified by community's perceptions.	WACHS & PCADS	MHC & LDAG. Funding submission required	Bloodwood Tree, TOPH, Wirraka Maya, SDERA, PH Liquor Accord, Yaandina Mar-May 19 Ongoing

<p>Messages could include:</p> <ul style="list-style-type: none"> o Alcohol and health impact on the individual o Social consequences o Cultural Impacts o Secondary Supply o Issues with pre-loading o Home Brew Kits and Sly Grogging <p>Also trying in where possible with the State Campaigns:</p> <ul style="list-style-type: none"> • Alcohol Think Again: Cyclone Parties "Stay Sober Stay Safe" • Alcohol Think Again: Healthy Safe Sporting Environments • Alcohol Think Again: Impact of youth alcohol consumption <p>Distribution of campaign materials utilising the Alcohol Think Again campaign kit resources.</p>	MHC & PCADS	ADF	Bloodwood Tree, TOPH, WWC, YIC, PMHU, Dept. Corrective Services, Hope Services, Wirraka Maya, WACHS, PADAP & Yaandina	Ongoing
<p>Enhance Alcohol Think Again messages in existing community and sporting events.</p>	TOPH & Bloodwood Tree	MHC & ADF	WACHS, PADAP, PCADS & Wirraka Maya	Ongoing
<p>Ensure that health information brochures and harm reduction information is available to community from various locations across the community, including: clinics, hospital, police station, youth services, local government and AOD services.</p>	MHC & Wirraka Maya	ADF & SDERA	PCADS, Bloodwood Tree, TOPH, WWC, YIC, HeadSpace, Dept. Corrective Services, PMHU, WACHS, PADAP, Hope Services, Telethon Kids Institute & Yaandina	Ongoing
<p>Support the promotion of existing AOD services (incl a local AOD services directory/map and referral guide).</p>	MHC & Bloodwood Tree	ADF & Dept. PM&C	PCADS, TOPH, WWC, YIC,	Ongoing

			<p>Telethon Kids Institute, WACHS, PADAP, SDERA, HeadSpace, Dept. Corrective Services, PMHU, Hope Services, Wirraka Maya & Yaandina</p>	
<p>Promote Statewide support telephone lines and online supports.</p>	<p>MHC & Wirraka Maya</p>	<p>ADF</p>	<p>PCADS, WWC, YIC, HeadSpace, Bloodwood Tree, TOPH, PMHU, Hope Services, Dept. Corrective Services, WACHS, PADAP & Yaandina</p>	<p>Ongoing</p>
<p>Promote training and professional development opportunities (incl development of an AOD services training calendar) for local service providers e.g. FASD & Mental Health First Aid.</p>	<p>MHC & PCADS</p>	<p>ADF, Dept. PM&C, WACOSS & Peer Based Harm Reduction WA (formerly WASUA)</p>	<p>Bloodwood Tree, WWC, YIC, SDERA, PMHU, HeadSpace Wirraka Maya, Telethon Kids Institute, WACHS, PADAP & Yaandina</p>	<p>Mar-May 18 Dec 18-Jan 19 Dec 19- Jan 20</p>

PRIORITY AREA TIMELINE

Priority 1	Action	2018												2019												2020			
		Jan	Feb	Mar	Apr	May	Jun	Jul	Aug	Sep	Oct	Nov	Dec	Jan	Feb	Mar	Apr	May	Jun	Jul	Aug	Sep	Oct	Nov	Dec	Jan	Feb	Mar	
	Develop and implement a Communication Plan (incl calendar of events) to distribute consistent messages for changing the culture/normalisation of alcohol use.																												
	Identify opportunity for local media campaign to reflect key messages of the effects of alcohol and alcohol being a whole of community issue (radio ads promoting local services, health effects messages, local radio interviews with counsellors from services etc.).																												
	Develop and implement a local public awareness education campaign to raise awareness of alcohol being a whole of community issue and the consequences of harmful alcohol use.																												
	Distribution of campaign materials utilising the Alcohol Think Again campaign kit resources.																												
	Enhance Alcohol Think Again messages in existing community and sporting events.																												
	Ensure that health information brochures and harm reduction information is available to community from various locations across the community, including: clinics, hospital, police station, youth services, local government and AOD services.																												
	Support the promotion of existing AOD services (incl a local AOD services directory/map and referral guide).																												
	Promote State wide support telephone lines and online supports.																												
	Promote training and professional development opportunities (incl development of an AOD services training calendar) for local service providers e.g. FASD & Mental Health First Aid.																												

PRIORITY 2 Addressing the impact of alcohol on families and young people

Excessive alcohol consumption and alcohol related harm is having a significant impact on local families and young people, directly (violence, law & order incidents) and indirectly (community and town pride).

SHORT-TERM OUTCOME/S (next 24 months)		KEY PERFORMANCE INDICATOR	COLLECTION TOOL	COLLECTED BY
Community is more knowledgeable of the harms caused by alcohol, on families and young people	Pre/post community perception survey demonstrating an increase in knowledge/understanding	Perception Survey	All PHAODMP Members	
Promote the participation of families and young people, including vulnerable families and young people in AOD free diversionary activities and educational workshops	Number of AOD free family and youth events and education workshops, including increased awareness and attendance	Attendance numbers and post event perception survey	All PHAODMP Members/Event Organisers	
Community is more aware and knowledgeable of the harmful effects of the use of alcohol in sporting settings	Number of sporting clubs implementing the Good Sports Program (or similar) locally	Pre-Post audit of sporting clubs measuring policies, management measures and strategies addressing the harmful use of alcohol in sporting settings	TOPH	
ACTIONS				
Demand Reduction (educate/persuade/design/control)				
Develop and implement a Communication Plan (incl calendar of events) to distribute consistent messages for raising the awareness on the impact of alcohol on families and young people.	WACHS & Bloodwood Tree	MHC, ADF, TOPH & HCR	All PHAODMP Members	Mar-May 18 Dec 18-Jan 19 Dec 19 – Jan 20
Identify opportunity for local media campaign to reflect key messages of the effects of alcohol harm on families and young people (radio ads promoting local services, health effects messages, local radio interviews with WA Police, counsellors from services etc.).	TOPH & HCR	MHC & ADF	WACHS, PADAP, WA Police, Bloodwood Tree, PCADS & Wirraka Maya	May-Jun 18 Jan-Feb 19 Jan-Feb 20

Education sessions as part of sporting club activities to families and young people.	TOPH & Bloodwood Tree	MHC, ADF & Telethon Kids Institute	Dept. Sport & Rec, Good Sports, SDERA, YIC & HeadSpace	Feb-Mar 18 Aug-Sept 18 Feb-Mar 19 Aug-Sept 19 Feb-Mar 20
Support sporting clubs to implement policies when young people get involved in senior sporting activities.	TOPH & Bloodwood Tree	MHC & ADF	Dept. Sport & Rec, Good Sports, SDERA, YIC & HeadSpace	Ongoing
Support SDERA's continued involvement in schools to deliver relevant AOD education.	Department Education & SDERA	MHC & ADF	Bloodwood Tree, PCADS, Wirraka Maya, YIC, HeadSpace & Helping Minds	Ongoing
With local youth, develop a local alcohol message that raises the awareness of the impact and harm of alcohol consumption on youth and families.	MHC & Bloodwood Tree	MHC & ADF	PCADS, Wirraka Maya, YIC, TOPH, WACHS, PADAP & SDERA	Feb-Jun 18
Deliver two AOD free activities per year that raise awareness of the harms associated with high-risk alcohol use and families/young people.	TOPH & Wirraka Maya	MHC & ADF	Telethon Kids Institute, Bloodwood Tree, PCADS, WA Police, YIC, HeadSpace & Helping Minds	April & Jul 18 April & Jul 19
Support to disseminate information about alcohol offences, drink driving, violence, family domestic violence, alcohol related Hospital admission numbers.	WA Police & PADAP	MHC	Hedland Health Campus, St John Ambulance & Telethon Kids Institute	Ongoing

Supply Reduction (design/control)					
Support safer environments at identified community and sporting events.	TOPH & WA Police	MHC & ADF	Port Hedland Liquor Accord	Ongoing	
Support the implementation of the Good Sports Program or similar within all sporting clubs.	TOPH & Bloodwood Tree	MHC & ADF	Dept. Sport & Rec & Good Sports	Ongoing	
Support the Port Hedland Liquor Accord to promote awareness of responsible drinking within licensed venues and community/sporting events.	TOPH & Port Hedland Liquor Accord	WA Police Liquor Enforcement & MHC Liquor Licensing	WA Police	Ongoing	
Promote the responsible service of alcohol within all licensed venues, community and sporting events.	TOPH & Port Hedland Liquor Accord	WA Police Liquor Enforcement & MHC Liquor Licensing	WA Police	Ongoing	
Harm Reduction (educate/persuade)					
Community education sessions targeting families addressing alcohol related harm and planning harm minimisation strategies with young people.	MHC & PCADS	MHC, ADF, SDERA & Telethon Kids Institute	WWC, YIC, HeadSpace, Bloodwood Tree, TOPH, PMHU, Hope Services, Dept. Corrective Services, WACHS, PADAP & Yaandina	May-Jul 18 May-Jul 19 Dec 19-Feb 20	
Distribute Alcohol and Young People resources throughout the community.	MHC & Wirraka Maya	MHC & ADF	PCADS, WWC, YIC, HeadSpace, Bloodwood Tree, TOPH, PMHU, Hope Services, Dept. Corrective Services,	Ongoing	

	MHC & PCADS	MHC, ADF, Dept. PM&C & SDERA	WACHS, PADAP & Yaandina Telethon Kids Institute, Bloodwood Tree, TOPH, WWC, YIC, HeadSpace, WACHS, PADAP, Dept. Corrective Services, PMHU, Hope Services, Wirraka Maya & Yaandina	Ongoing
Support the promotion of existing AOD services for families and youth.	WACHS & YIC	MHC, ADF, Dept. PM&C, SDERA & Telethon Kids Institute	PCADS, WWC, Wirraka Maya, HeadSpace, Bloodwood Tree, TOPH, PMHU, Hope Services, Dept. Corrective Services & Yaandina	Ongoing
Promote Statewide family and youth focussed AOD support telephone lines and online supports.				

PRIORITY 3 Reducing alcohol-related violence in Port/South Hedland

Excessive alcohol consumption is having a significant impact on individuals, families and businesses in Port/South Hedland, in particular high levels of alcohol related violence and family domestic violence (physical harm, child welfare issues, law & order incidents) and indirectly (community and town pride).

SHORT-TERM OUTCOME/S (next 24 months)	KEY PERFORMANCE INDICATOR	COLLECTION TOOL	COLLECTED BY
Community is more knowledgeable on the link between alcohol and violence, including family domestic violence.	Pre/post community perception survey demonstrating an increase in knowledge/understanding	Perception Survey	All PHAODMP Members
Reduced number of incidences of alcohol-related violence and alcohol-related family domestic violence.	Number of reported/recorded incidences of alcohol-related violence and alcohol-related family domestic violence	Monthly data template sheet for recording and tracking of number of reported/recorded incidences of alcohol-related violence and alcohol-related family domestic violence	WA Police, PCADS, Hedland Health Campus & St John Ambulance services
ACTIONS			
Demand Reduction (educate/persuade/design/control)			
Work closely with Family Domestic Violence workers, PCADS and WA Police Community Policing Officers to monitor trends and promote support services for families.	WA Police & PCADS	Report Data/Caseloads	Hedland Health Campus, Relationships Australia, PCLS, Helpingminds & St John Ambulance services
Educate young children on how to create their own safe place/space.	Dept Education & Bloodwood Tree	MHC, Kid Safe, ADF & Telethon Kids Institute	Bloodwood Tree, PCADS, Wirraka Maya, Helping Minds, SDERA, Relationships Australia, YIC &
			Ongoing
			Coincide with school holiday periods

Investigate the need for an after-hours place as a "safe overnight stay" place for young people.	TOPH & YIC		Dept. Communities	Jul-Dec 18
Supply Reduction (design/control)				
Promote the ability of homeowners to seek Section 152 Dry Houses to reduce incidents of alcohol-related violence within homes/residential areas.	WA Police & PCADS	Dept. Racing, Gaming & Liquor	Dept. Communities & Bloodwood Tree	Ongoing
Work with WA Police to investigate different approaches to community policing and the way services can support WA Police to improve outcomes for families.	WA Police & PCADS	Port Hedland Women's Refuge	WWC, Wirraka Maya, Helping Minds, Relationships Australia & Dept. Communities	Ongoing
Investigate the development of a banned drinker's register, in conjunction with the Courts, utilising flexible/non-discriminatory means of personal identification.	TOPH & Port Hedland Liquor Accord	Magistrate, MHC Liquor Licensing & Dept. Racing, Gaming & Liquor	WA Police, Bloodwood Tree & Dept. Corrective Services	Mar-Jun 18
Harm Reduction (educate/persuade)				
Alternatives to violence workshops and capacity building/training for community on alternatives to violence.	TOPH & Bloodwood Tree	MHC & AVP	WA Police, Relationships Australia, Wirraka Maya, PCADS, Helping Minds & Dept. Corrective Services	Ongoing
Creation of a local men's group and/or men's shed	Wirraka Maya & IBN	Lotterywest funding & approaching	TOPH, Dept. Communities & WA Police	Mar – Jul 18

	<p>Delivery of men's specific wrap around/professional development/workshops around anger management, conflict resolution, dealing with stressful circumstances, effective communication and support available.</p>	<p>TOPH & Wirraka Maya</p>	<p>Funding</p>	<p>Bloodwood Tree, Helpingminds, WACOSS & Men's Shed WA</p>	<p>Ongoing</p>
<p>Investigate the possibility of a men's DV hostel.</p>	<p>Dept. Communities & Bloodwood Tree</p>	<p>Funding AHL Hostels & Breathing Space</p>	<p>WA Police, Bloodwood Tree, Wirraka Maya, IBN & Dept. Corrective Services</p>	<p>Jul-Dec 18</p>	

PRIORITY 4 Addressing needle syringe disposal issues and raising awareness of local NSP programs

Incorrect disposal of needles promotes a risk to the wider community. It is important that the safe use of needles be promoted, as well as the correct disposal of needles in the community.

SHORT-TERM OUTCOME/S (next 24 months)	KEY PERFORMANCE INDICATOR	COLLECTION TOOL	COLLECTED BY
Community is more knowledgeable on the need for NSP and the safe use and disposal of needles.	Pre/post community perception survey demonstrating an increase in knowledge/understanding	Perception Survey	All PHAODMP Members
Community is more knowledgeable on the correct way to dispose of needles, including reporting and handling of incorrectly disposed of needles from public areas	Pre/post community perception survey demonstrating an increase in knowledge/understanding	Perception Survey	All PHAODMP Members
Reduced number of incidences of incorrectly disposed of needles in Port/South Hedland.	A decrease in the number of reported incorrectly disposed needles in Port/South Hedland.	No. of reported incorrectly disposed sharps in Port/South Hedland.	TOPH
ACTIONS			
Demand Reduction (educate/persuade/design/control)			
WACHS to appoint a Pilbara Region NSP Coordinator.	WACHS	Funding Hepatitis WA	PCADS, WWC & SHBBVP May- Jun 18
Collect and make available to the public data on the number of Fitpacks distributed annually from the NSP sites.	WACHS & WWC	MHC & ADF	PCADS, Bloodwood Tree, Wirraka Maya & Relationships Australia Ongoing
Record and map out the locations of incorrectly disposed needles in Port/South Hedland and identify hot spots in the area.	TOPH & WWC	WACHS	Litter collection community groups & individuals Ongoing
Identify, implement and promote education and the reporting pathways for community if they find incorrect disposed needle and syringes.	TOPH, WACHS & WWC	MHC, ADF & Peer Based Harm Reduction	SHBBVP Ongoing

		WA (formerly WASUA)		WA (formerly WASUA)	
Supply Reduction (design/control)					
Provide and maintain safe disposal units in toilets and other facilities/areas where there is a high frequency of needle finds.	TOPH & WACHS	Peer Based Harm Reduction WA (formerly WASUA)	WACHS	WWC	Ongoing
Review current signage on and around the safe disposal units. Where required include more hazard signs on containers, maps of how to get to current NSP sites and disposal units in Port/South Hedland.	TOPH	Peer Based Harm Reduction WA (formerly WASUA)	TOPH	WACHS, WWC & SHBBVP	Jul-Dec 18
Harm Reduction (educate/persuade)					
Review and assess if the number, location and size of the current disposal units are adequate.	TOPH	Peer Based Harm Reduction WA (formerly WASUA)	TOPH	WACHS & WWC	Jul-Dec 18
Consider the environment at identified 'hot spots' in Port/South Hedland and identify ways to make these areas more conducive to prompt the correct disposal of needle and syringes.	TOPH	Peer Based Harm Reduction WA (formerly WASUA)	TOPH	WACHS & WWC	Jul-Dec 18
Promote safer use and disposal of needles.	WACHS & WWC	Peer Based Harm Reduction WA (formerly WASUA)	WACHS & WWC	TOPH	Ongoing
Investigate the possibility of a mobile NSP service.	WACHS & Bloodwood Tree	Peer Based Harm Reduction WA (formerly WASUA)	WACHS & Bloodwood Tree	SHBBVP & Hepatitis WA	Jul-Dec 19
Provide the Council, litter collection community groups/individuals and members of the public with safe needle disposal training.	TOPH	MHC, ADF & Hepatitis WA	TOPH		Ongoing
Installation of sharps disposal units at/nearby NSP hot spots if required.	TOPH & WWC		TOPH & WWC	WACHS	Jul-Dec 18
Provision of safe disposal information, including verbal advice and written resources/signage at the NSP sites.	WACHS & WWC	Peer Based Harm Reduction WA (formerly WASUA)	WACHS & WWC	Hepatitis WA	Ongoing

<p>Develop, implement and support public education initiatives regarding safe needle use and correct disposal of needles.</p>	<p>WACHS & WWC</p>	<p>WASUA) & SHBBVP Peer Based Harm Reduction WA (formerly WASUA)</p>	<p>PCADS, TOPH, SHBBVP & Hepatitis WA</p>	<p>Ongoing</p>
---	------------------------	--	---	----------------

PRIORITY AREA TIMELINE

Priority	Action	2018												2019					2020												
		Jan	Feb	Mar	Apr	May	Jun	Jul	Aug	Sep	Oct	Nov	Dec	Jan	Feb	Mar	Apr	May	Jun	Jul	Aug	Sep	Oct	Nov	Dec	Jan	Feb	Mar			
4	WACHS to appoint a Pilbara Region NSP Coordinator.																														
	Collect and make available to the public data on the number of Fitpacks distributed annually from the NSP sites.																														
	Record and map out the locations of incorrectly disposed needles in Port/South Hedland and identify hot spots in the area.																														
	Identify, implement and promote education and the reporting pathways for community if they find incorrect disposed needle and syringes.																														
	Provide and maintain safe disposal units in toilets and other facilities/areas where there is a high frequency of needle finds.																														
	Review current signage on and around the safe disposal units. Where required include more hazard signs on containers, maps of how to get to current NSP sites and disposal units in Port/South Hedland.																														
	Review and assess if the number, location and size of the current disposal units are adequate.																														
	Consider the environment at identified 'hot spots' in Port/South Hedland and identify ways to make these areas more conducive to prompt the correct disposal of needle and syringes.																														
	Promote safer use and disposal of needles.																														
	Investigate the possibility of a mobile NSP service.																														
Provide the Council, litter collection community groups/individuals and members of the public with safe needle disposal training.																															
Installation of sharps disposal units at/nearby NSP hot spots if required.																															
Provision of safe disposal information, including verbal advice and written resources/signage at the NSP sites.																															
Develop, implement and support public education initiatives regarding safe needle use and correct disposal of needles.																															

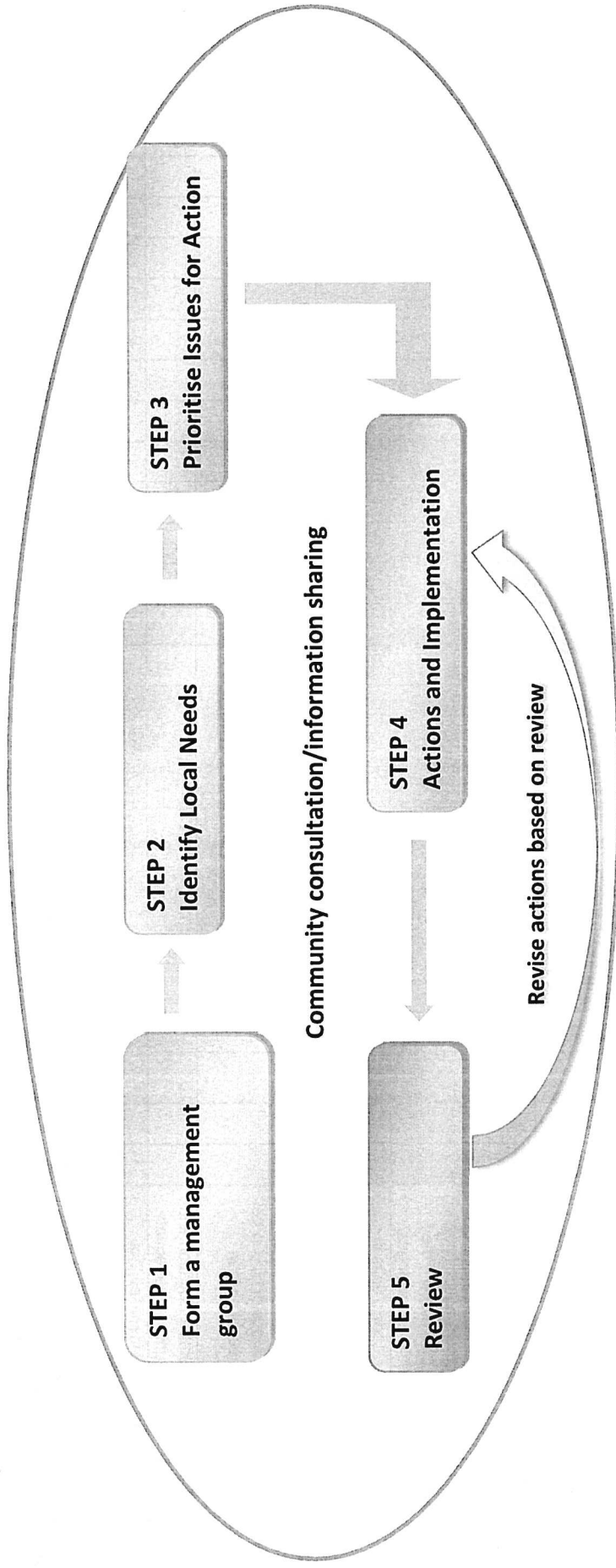
APPENDIX 1

PLANNING FOR AN EFFECTIVE PLAN

Creating a sustainable reduction in alcohol and other drug related harm is a complex and long-term process. Issues can be overwhelming and seen as too difficult to address at a local level. However, with some effective planning, it is at the local level where partnerships between communities and services can have the greatest impact.

Prior to establishing and implementing an alcohol and other drug management plan (AODMP), a number of steps need to happen to ensure the resulting plan has been developed in partnership to reflect the communities needs and has the best chance at creating sustainable change.

It is important that the community have a strong understanding of the issues and have ownership of the strategies developed to address them. To ensure this, processes should be put in place that allow community input into all stages of the development and implementation of the AODMP, including progress made against addressing the issues.



APPENDIX 2 - Outcomes from Review of 2014-2016 PHAODMP

PRIORITY 1 Changing the Culture of Alcohol Consumption in Port Hedland	
ACTIONS	LEAD
<p>Demand Reduction (educate/persuade/design/control)</p> <p>Awareness campaign</p> <ul style="list-style-type: none"> • Focus on broader community • Develop a local alcohol message that raises awareness of the potential impact of binge drinking. • Identify appropriate forums/events/networks/social media to distribute messages and information. <p>Information sharing: Ensure that appropriate brochures etc. available to community in key places/spaces</p> <p>Cyclone Parties "Stay Sober. Stay Safe" project</p>	<p>WACHS</p> <p>PHOADMG</p> <p>WAPOL</p> <p>In progress. Campaign has been delayed due to issues with funding. (WACHS pop health) is now leading this project and have completed a funding application.</p> <p>Ongoing. This is revisited by the group every 6 months or so. It could do with being more formalised.</p> <p>Complete (2015/16 and 2016/16 seasons). Built into TOPH and CoK annual campaigns. Print resources available for following cyclone season. They are distributed via PCADS, BTA to other agencies and Police (LEU in Karratha and OIC in Hedland) to Licensees via Accord meetings for point of sale distribution and posters during warnings.</p>
<p>Supply Reduction (design/control)</p> <p>Ensure appropriate policy in place: Focus local sporting/social clubs</p> <ul style="list-style-type: none"> • Promote and work alongside local sporting/social officials/LGA their involvement in a project to reduce harm. <p>Focus on community events</p> <ul style="list-style-type: none"> • Identify high-risk community events and review alcohol management policies. • Negotiate for NVEEP where appropriate. <p>Focus on off premise sales</p> <ul style="list-style-type: none"> • Work in partnership with Port Hedland Liquor accord to develop a strategy to address issues of consumption of liquor and supply to minors that occurs outside liquor stores. 	<p>BTA</p> <p>BTA</p> <p>BTA, WACHS</p> <p>In progress. BTA linking with DSR and ToPH. NVEEP audits completed for NW Festival (2015, 2016). MHC Safer Settings project ongoing – have requested the teamwork with Sunset events in preparation for the NW Festival 2017. Completed (2014) CCTV. BTA held discussions with accord regarding selling to people who were purchasing on behalf of others. ToPH re-arranged taxi rank, car park to address some loitering. Recent workshops with stakeholders indicates this is still an issue particularly at South Hedland shopping centre.</p>

<p>RSA checks</p> <ul style="list-style-type: none"> • Conduct regular checks /improved enforcement of adherence of licensed premises including sporting clubs to the Liquor Control Act. • Events are monitored for RSA. • Targeted enforcement of RSA • Negotiate with DAO for NVEEP where appropriate. 	<p>WAPOL</p>	<p>Ongoing by LEU. NVEEP audits completed for high risk licensed venues (2015). MHC Safer Settings project ongoing, Pilbara to be a priority area for this project. Perception from stakeholders in recent workshops is that RSA at licensed venues is an ongoing issue.</p>
<p>Restrictions</p> <ul style="list-style-type: none"> • Continue to collect appropriate information to assist with the evaluation of existing restrictions for Port Hedland and surrounding communities • Support applicants for restricted premise process as appropriate 	<p>BTA</p>	<p>Ongoing. S64 enquiry in progress for Hedland. MHC submissions. Accord implemented voluntary restrictions in response to s64. There is no system to track sales from different bottle shops. Also feedback that people are encouraged to buy full take-away allocation when making a purchase (i.e. if person buying under the limit the licensee will tell them they can still buy another bottle of wine/spirits etc.)</p>
<p>Harm Reduction (educate/persuade)</p>		
<p>PHADMG promote the AOD counselling services</p>	<p>BTA, PCADS, Yaandina</p>	<p>Completed, but requires regular follow up/reinforcing with staff turnover etc.</p>
<p>Identify Professional Development programs for service providers to increase their ability to reduce harm e.g.: FASD, Mental Health first aid.</p>	<p>PHADMG</p>	<p>A number of training sessions have been held and promoted to the Group. VSU, Methamphetamine, opioid, prevention, FASD, training delivered. Gatekeeper train the trainer promoted.</p>
<p>PRIORITY 2 Reduction of the secondary supply of alcohol to youth</p>		
<p>ACTIONS</p>		
<p>• Short-term Outcome: Better informed parents who are not providing alcohol to their children.</p>		
<p>Demand Reduction (educate/persuade/design/control)</p>		
<p>Education sessions as part of sporting club activity to young people and parents</p>	<p>BTA</p>	<p>Incorporated into football/VSwans in 2015, but not sustained.</p>
<p>Supply Reduction (design/control)</p>		

Licensed sporting clubs - protective policies when young people get involved in senior sporting activities	BTA	BTA advocated for and supported the separation of alcohol and youth sporting events (~2014). Ongoing policy work with sporting clubs has been identified as an area for continued action in recent workshops with local stakeholders.
Short-term Outcome: Alcohol education for young people in the school and also to youth at risk (disengaged youth)		
Demand Reduction (educate/persuade/design/control)		
School drug education <ul style="list-style-type: none"> Advocate for the development and implementation of appropriate alcohol education programs in all schools in Hedland Deliver professional development training to school staff. 	SDERA	Ongoing. Talking Drugs Workshop delivered (2016). Parent workshops offered, numerous staff capacity building session offered.
Awareness activities <ul style="list-style-type: none"> Develop a calendar of relevant youth events – school balls, leavers, Christmas/New Year’s parties, and school holidays. These events will provide an opportunity to promote a youth alcohol message. With local youth group, develop a local alcohol message that raises awareness of the potential impact of youth alcohol consumption. 	BTA, PCADS	Calendar developed Secondary supply laws and leavers resources promoted through schools – led by LEU. SDERA also did a mini campaign through schools regarding leavers utilising ATA resources.
Harm Reduction (educate/persuade)		
Referral pathways to local services <ul style="list-style-type: none"> Health services and AOD Counsellors establish referral pathways with local youth services and school. Promote referral pathways with staff and relevant agencies. 	PHAODMG	Completed, again this is an action that needs to be reinforced regularly.
PRIORITY 3 Preventing and reduce volatile substance use (VSU)		
ACTIONS		
LEAD		
Short-term Outcome: Prevent and reduce the incidence of volatile substance use in Port Hedland and surrounding communities		
Demand Reduction (educate/persuade/design/control)		
Investigate the need for specific recreational/diversionary activities/programs and potential sources of funding for at risk youth	YIC	This was combined with
Support innovative and alternative education and training strategies to engage at risk youth	SDERA	Resources available for services to use. SDERA includes these services in invitations for capacity building initiatives for the region e.g. talking drugs workshops, and has indicated that they are available

		on request to deliver additional training/support to services to utilise resources and deliver AOD education in an evidence-based manner.
Support innovative employment and training strategies to engage young people	Bloodwood Tree	Back to Country Program was established. YIC supported activities with equipment/resources such as kayaks etc. that they had from a previous program that was defunded.
Support the development of health and wellbeing programs which seek to connect Aboriginal youth with cultural activities on 'country'	DAA, IBN	As above – led by BTA
Map available youth and AOD services to identify gaps in service delivery and funding	YJS	Completed by Youth Justice originally. Needs to be updated.
Supply Reduction (design/control)		
Disseminate Retailers Information Kit to provide information for local retailers about the responsible sale of volatile substances	DPMC	Completed. PCADS now distribute this information with support of PHAODMG on a regular basis.
Nominate a group member to keep local retailers informed of trends and patterns in use	WAPOL	As needs basis. Recently this has been done by PCADS/BTA with Police support when required.
Disseminate Pilbara Industry Information Kit to mining companies and contractors to encourage the responsible storage, transportation and disposal of volatile substances.	DPMC	Completed. PCADS now distribute this information with support of PHAODMG on a regular basis.
Develop and induction presentation addressing VSU with MARCSTA industry induction training	DPMC, MHC	Completed by state VSUY coordinator.
Disseminate tourist brochure to inform tourists about the responsible transport, disposal and storage of volatile substances	TOPH, DPMC	Completed. PCADS now distribute this information with support of PHAODMG on a regular basis.
Consider other strategies to inform tourists and travellers as required	All	No outstanding strategies to my knowledge.
Development of discrete community safety campaigns to inform relevant community members of measures to decrease theft of and limit access to volatile substances	DMPC	Completed.
Support the introduction of low aromatic fuel to designated retailer/s in Hedland	DPMC	Completed for Western Desert Communities – will not be implemented for Hedland
Harm Reduction (educate/persuade)		
Provide support and information for local media to ensure responsible reporting of VSU incidents and issues	PCADS	Media guidelines developed and disseminated. This should be done on a regular basis due to transience of workforce.

Nominate media spokespersons for the AODMG to engage with media and provide them with the VSU media booklet	PCADS, WAPOL, BTA Yaandina	This was done however it needs revisiting/to be maintained regularly.
Short-term Outcome: Ensure appropriate and timely coordinated responses to incidents of volatile substance use in Port Hedland and surrounding communities		
Harm Reduction (educate/persuade)		
Provide education and training to stakeholders/service providers to ensure best practice in the management of VSU incidents and the engagement of individuals who use volatile substances	MHC, PCADS, Yaandina	VSU training delivered to Hedland annually.
Adopt and implement VSU reporting and response system to ensure reporting of VSU incidents and a coordinated and timely response	DPMC, PCADS	Completed. PCADS now manage this for the Pilbara region.
Promotion of VSU incident reporting and response system to local service providers and stakeholders through broad distribution of the VSU Incident Reporting and Response kit	DPMC, PCADS	Completed. PCADS now manage this on an ongoing basis for the Pilbara region. PCADS Hedland office maintain the regional distribution list and send bi-monthly email reminders. AODMG chairs distribute the information if there is a spike in incidents (reported or anecdotal). Distribution of printed resources is completed approximately every 6 months.
Short-term Outcome: Reduce harms associated with volatile substance use in Port Hedland and surrounding communities		
Demand Reduction (educate/persuade/design/control)		
Identify specific target groups for further education/training. Ensure evidence based, targeted information and education is delivered to users, family and community as required. Consider a range of educational approaches to ensure information reaches target audiences	PCADS	Completed and ongoing. This is part of the incident response process and is completed on an as-needs basis.
Harm Reduction (educate/persuade)		
Case management of high-risk young people. Link to Child Safety Group to ensure a collaborative and coordinated approach to addressing the needs of high-risk individuals who use volatile substances.	DCPFS	Ongoing.